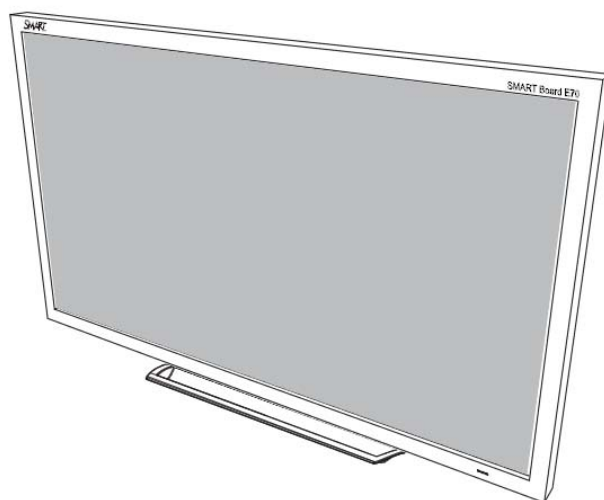


**SMART<sup>®</sup>**



***Service Parts  
Diagrams***

**For Model:  
SPNL-4070**

## Service Parts Diagrams Revision History

### Revision 1 - August, 2013

- New document

### Revision 2 - December, 2013

- Add 93-056

### Standard Warranty Terms

Base product: Two-year limited equipment warranty

First Customer Ship: September, 2013

---

#### SMART Technologies

3636 – Research Road NW

Calgary, AB T2L 1Y1

CANADA

Support +1.403.228.5940 or Toll Free 1.866.518.6791 (Canada/U.S.)

Support Fax +1.403.806.1256

[www.smarttech.com/contactserviceparts](http://www.smarttech.com/contactserviceparts) [www.smarttech.com](http://www.smarttech.com)

The SMART logo consists of the word "SMART" in a bold, stylized, sans-serif font. The letters are black with a white outline, and a registered trademark symbol (®) is located at the bottom right of the letter "T".

# Service Parts Diagrams for the SPNL-4070

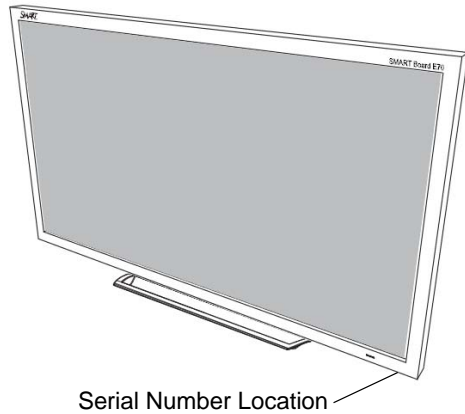
---

Identifying Your Product Using the Serial Number ..... 1  
Ordering Parts ..... 1  
SPNL-4070 Parts ..... 2



## Identifying Your Product Using the Serial Number

To make sure that you have the correct service parts diagrams, you must verify the serial number of your SPNL-4070. The serial number will be located on the right underside of the bottom bezel. An example of the serial number format is shown below.



Unique Serial Number

**M102FW28A0057**

## Ordering Parts

### Customers

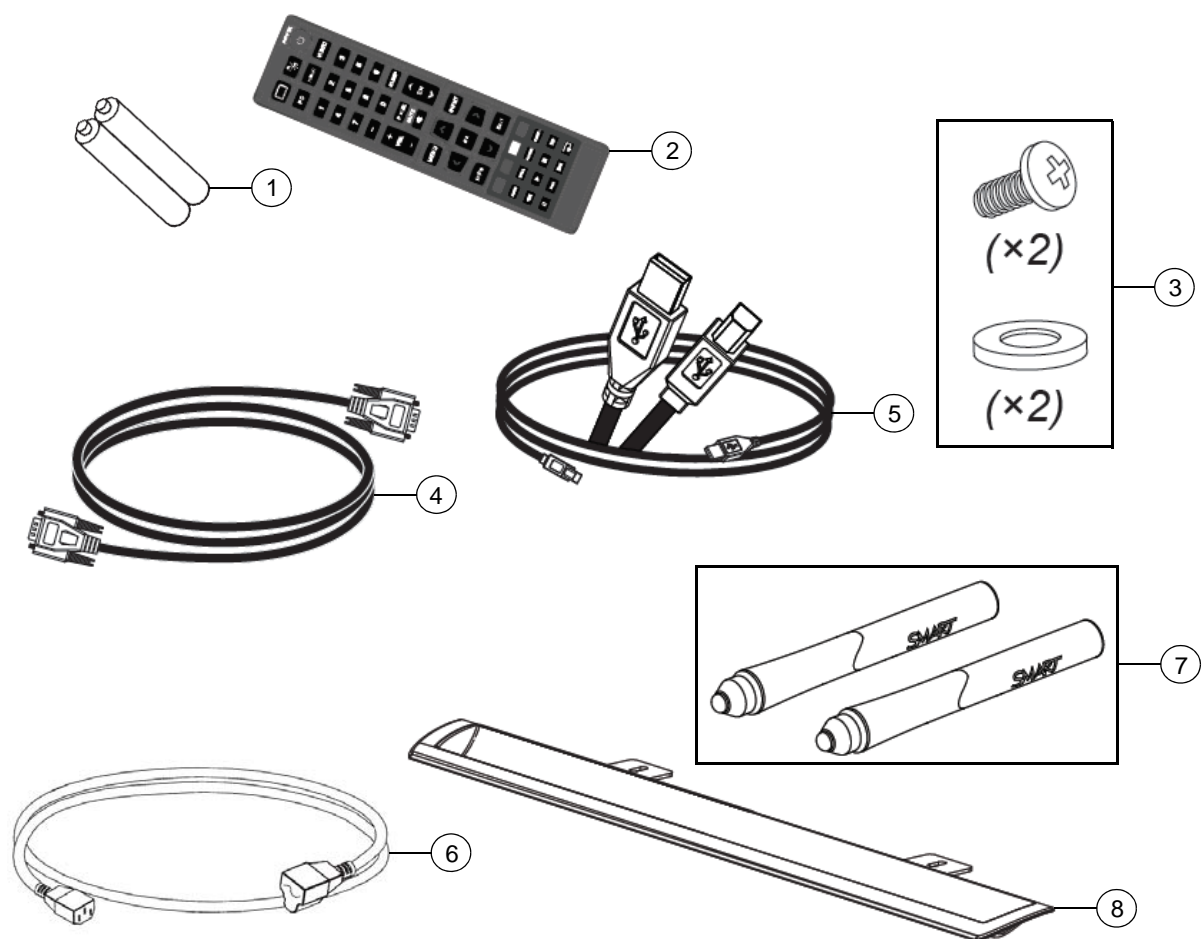
To order any of the parts in these service parts diagrams, contact your local reseller. To find a reseller near you, visit [www.smarttech.com/where](http://www.smarttech.com/where).

### Dealers and Distributors

For specific technical and pricing enquiries in regards to these diagrams please contact our service parts department. Pricing is also available on-line via the SOURCE website ([source.smarttech.com](http://source.smarttech.com)).

Web Form: [www.smarttech.com/contactserviceparts](http://www.smarttech.com/contactserviceparts)  
Phone: 1.888.42.SMART  
International: +1.403.245.0333

## SPNL-4070 Parts



Item	Part No.	Qty	Description
1	01-00257	2	Battery, AAA
2	1021284	1	Assembly, remote control, SPNL-4070
3	1021689	1	Hardware kit, pen ledge
4	1018853	1	Cable, video, HD15 male to HD15 male 6' (1.8 m)
5	93-00828-20	1	Cable, USB, A-B, 16' (5.0 m)
6	93-051	1	Cable, power, North America, 8' (2.4 m)
6	93-055	1	Cable, power, United Kingdom, 8' (2.4 m)
6	93-054	1	Cable, power, Europe, 8' (2.4 m)
6	93-056	1	Cable, power, Australia, 8' (2.4 m)
7	RPEN-SBM6	1	Replacement Pens for SMART Board SBM600 Series and SPNL-4070 - Set of Two
8	1021011	1	Pen ledge